



Jiangsu Safety Group Co.,Ltd.

Presentation

SAFETY CITY
GREEN FUTURE



Contents

01

COMPANY
PROFILE

02

BUSINESS
SEGMENT

03

EXTENDED
SERVICE

CHAPTER 01

COMPANY PROFILE

DEVELOPMENT HISTORY



Wuxi Wire Rope
Factory(stated-owned)
was established

1958

Went through the state transition
Sino-foreign joint venture
Private holding

2000-2010

Listed on Shanghai
Stock Exchange
code: 603028

2016

Wholly acquired Torrent
Architectural Design (Suzhou)
Co., Ltd

2020

Embark on the path of
comprehensive
transformation

2023

1980

Developed China's first
elevator rope

2013

Successfully developed
the polymer rope core
Become the world's TOP3
wire rope field

2019

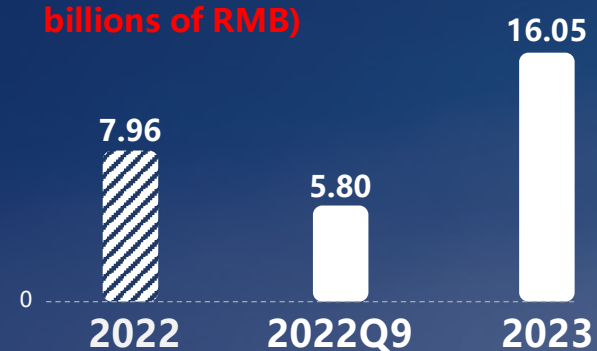
The controlling shareholder
changed to Suzhou Wuzhong
Rongtai Holdings

2022

Transformed investment
to establish Suzhou SAFETY New
Energy Technology Co., Ltd

~~-2023-~~

● Business Revenue (in billions of RMB)



■ Revenue

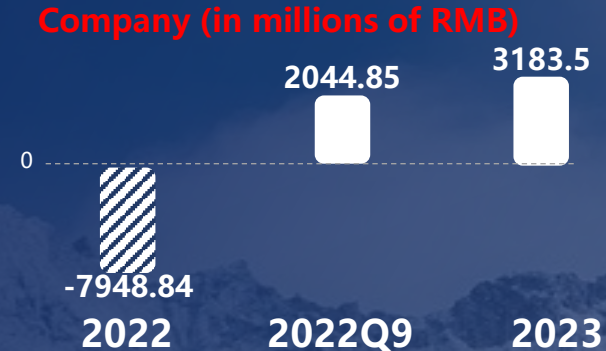
16.05 billion RMB

(YoY) Growth



+101.7%

● Net Profit Attributable to Parent Company (in millions of RMB)



■ EPS

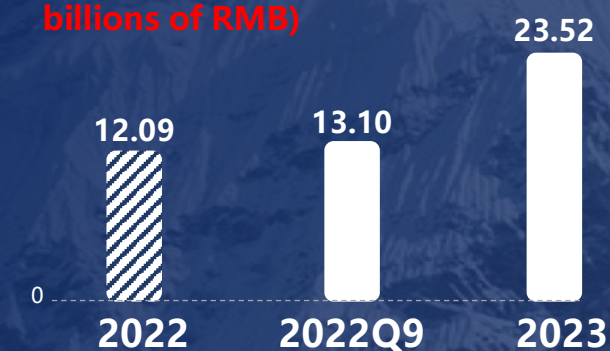
3183.5 ten thousand RMB

(YoY) Growth



+140.5%

● Total Assets (in billions of RMB)



■ Total assets

23.52 billion RMB

(YoY) Growth



+94.53%

Honor and qualification



5 item

National Torch Program

6 item

Industry Standards

6 item

Consortium Standards

8 place

Partner Institutions (Nanjing University of Science and Technology, Metallurgical Industry Research Institute, etc.)

144 item

Invention Patent

221 item

Utility Model Patent

377 item

Total number of patents

GROUP
COMPOSITION



Management
center



Cable
Division



Green construction
Division



Solar
Division

Functional
center

Strategic Investment Center

Organizational Center

Finance Center

Information Center

Planning Center

Risk Control Center

INDUSTRIAL DISTRIBUTION



The group has 14 wholly-owned and holding subsidiaries in Wuxi, Suzhou, Guangzhou, Changsha, Chuzhou, Xuzhou, Beijing, Shanghai, Hong Kong and other places.

📍 Green construction Division



Headquarters: SuZhou



Business Segment: BeiJing ShangHai,
ShenZhen



📍 Cable Division



Headquarters: WuXi



Business Segment: ChangSha,
GuangZhou, Hong Kong

📍 Solar Division



Headquarters: SuZhou



Business Segment: XuZhou,
Chuzhou

CHAPTER 02

BUSINESS SEGMENT



Cable Division

Steel wire ropes are not cold and lifeless; they have souls.



Headquarters: WuXi



Business Segment: ChangSha, GuangZhou, Hong Kong

700⁺

On-the-job staff

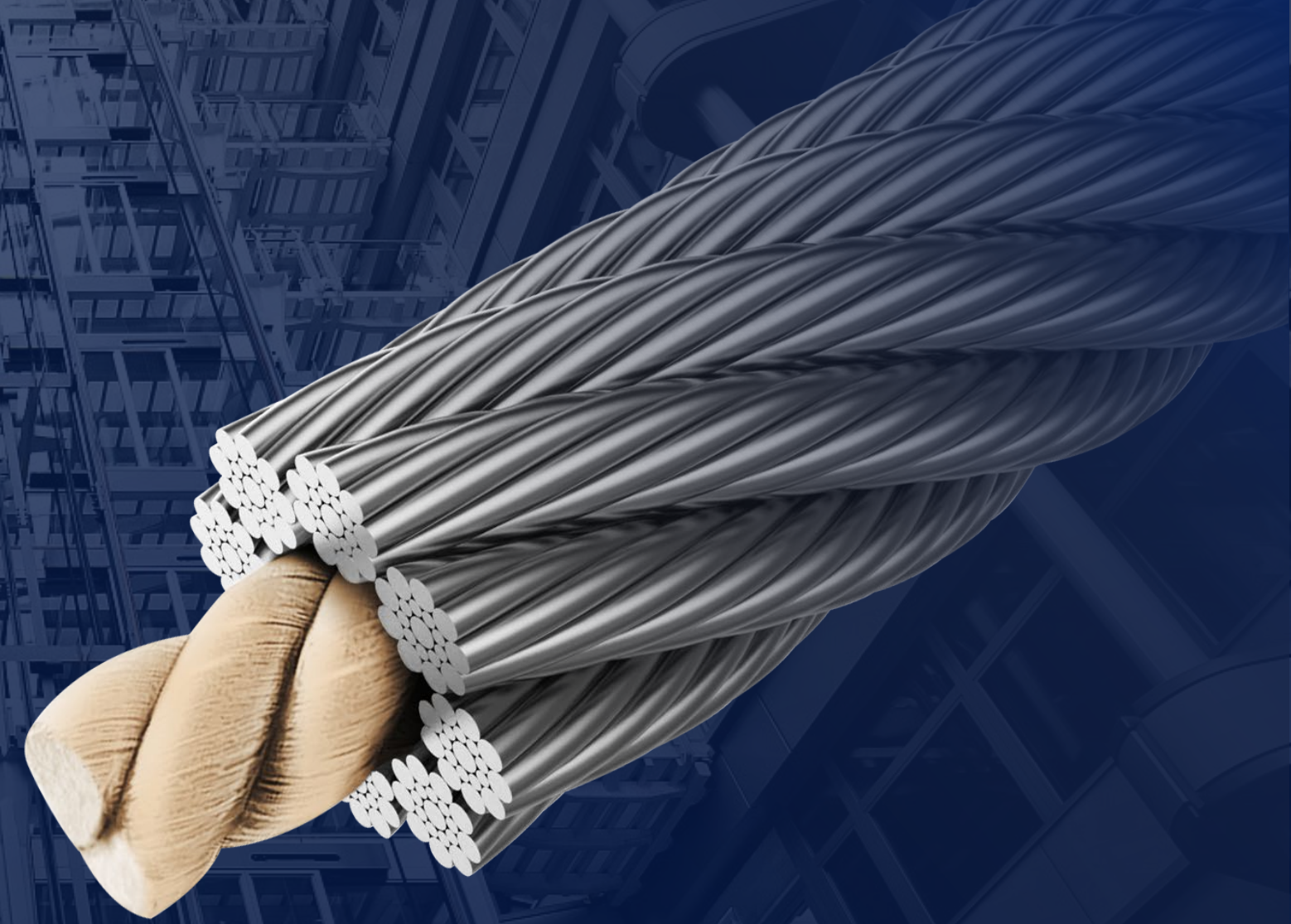
5.9 **Ten thousand tons**

Output of steel wire rope and supporting rigging in 2022

Holding the leading position in the industry

Pioneering in high polymer and ultra-high polymer steel wire ropes

- The products are mainly used as core components in elevators of high-rise buildings.
- The products serve as key components in elevators for high-rise buildings. Committed to providing integrated solutions for selection, installation, operation, and maintenance.
- Provides consistent service to the top ten global elevator manufacturers.



| Elevator rope



Cable division

More durable safety steel wire rope

Wear-resistant and compression-resistant, leading in the industry

- Our products are characterized by high strength, wear resistance, and fatigue resistance. We maintain long-term and positive cooperation with leading global manufacturers in the field of construction machinery applications.
- The products are known for their high tensile strength, wear resistance, and fatigue resistance.
- We have maintained long-term and beneficial cooperation with top global manufacturers in the field of construction machinery applications.

Steel wire ropes for
construction machinery



Cable division



Achieving Green Transformation of Materials in the field of steel wire ropes

- Pioneering in the development of high polymer rope cores, we are committed to the technological research and development as well as services of high polymer rope cores.
- Compared to traditional steel wire ropes, they are more environmentally friendly, have a longer fatigue life, superior low elongation characteristics, and higher tensile strength.
- These advantages can significantly enhance operational quality and safety performance, as well as extend the service life.



High/Ultra-High
Polymer Rope Core



Cable division

Professional Lifting and Rigging Solutions Service Company and Related Inspection and Testing Service Providers

- Lifting sling products include steel wire ropes, slings and accessories, lifting tools, fiber slings, chains, etc.
- The products are widely used in engineering machinery, coal mining, ocean engineering, wind power assembly, logistics, and other industries.
- Inspection services cover a variety of metal materials, steel wire ropes, slings and accessories, lifting tools, and other industrial products.
- We provide professional lifting inspections, annual/periodic inspections of lifting tools, and product safety verification for businesses such as offshore vessels, industrial rigging, high-altitude safety, and inspection services.



Lifting Sling and Lifting Strap
Inspection and Testing Services



Cable division

URBAN CONSTRUCTION PARTNERS



FUJITEC

XIO LIFT



HITACHI



OTIS electric



ZOOMLION



*Steel wire ropes are not cold and lifeless;
they have souls.*

Cable Division Strategic Plan



Continuous R&D investment



Leading industry development



Breaking through key customers



Consolidating industry position

Four strategic
preparations



Green construction Division

Forge ahead in the torrent,
with ideas bursting forth.



Headquarters: SuZhou



Business Segment: Beijing ShangHai

Class A qualification

Construction industry
construction engineering

Grade B Qualification

(Shanxi)
New energy power
generation major

Grade B Qualification

(Shanxi)
Major in substation
engineering

Grade B Qualification

(Shanxi)
Power transmission
engineering

Class A Architectural Design Qualification Enterprise

EPC Turnkey Project Management

- Our business covers industrial parks, commercial and office buildings, public buildings, hotel buildings, healthcare and elderly care buildings, urban renewal, educational buildings, residential buildings, and interior spaces.
- Under the EPC (Engineering, Procurement, and Construction) general contracting model, we are responsible for various stages of the project including design, procurement, construction, and commissioning, and are accountable for the quality, safety, and schedule of the project.
- We have absorbed an excellent design management team from Shanghai and Beijing, leading the industry in business capabilities.



EPC for architectural design



Green construction Division

BIPV(building integrated photovoltaics)

Energy construction design and construction qualification

- Establish a zero-carbon business division, leveraging BIPV to explore the "architectural design + photovoltaic" industry path and business model.
- Design qualifications: Class B in power transmission engineering, Class B in new energy power generation, Class B in transformer engineering.
- Construction qualifications: Second-level general contracting in mechanical and electrical engineering, second-level general contracting in power construction, fire protection, waterproofing and anti-corrosion, steel structure, decoration and installation, and safety production permit qualifications.



Energy design
and construction



Green construction Division

URBAN CONSTRUCTION PARTNERS



Schneider
Electric™
施耐德电气

GOODWE
固德威

GEELY
吉利控股集团
GEELY HOLDING GROUP

Chunxing 春兴

sii

DSBJ
东山精密



SHIN WU
新武精密机械维修(苏州)有限公司
SHIN WU MACHINERY TRADING CO.,LTD.

TJAD
同济设计 TJAD

*Forge ahead in the torrent,
with ideas bursting forth.*

Green Construction Division Strategic Plan



Leverage local advantages



Refine expertise in niche fields



Explore transformation pathways



Deepen opportunities for zero-carbon initiatives.

Four strategic
preparations



Solar Division

Solar Green Energy,
Building a Better Life.



Headquarters: SuZhou



Business Segment: AnHui, ChuZhou

60 +

On-the-job staff

0

5GW

TOPCon battery
1GW PERC battery

Professional photovoltaic cell manufacturer

New track of green energy

We own two major production bases: Suzhou Safety Heaven New Energy Technology Co., Ltd., Xuzhou Branch and Anhui Meidalen Photovoltaic Technology Co., Ltd.

- The main products are P-type PERC and N-type TOPCon photovoltaic cells, focusing on the 182mm and 210mm size specifications.
- The average conversion efficiency of PERC cells is 23.3%, and the average conversion efficiency of TOPCon cells is 26.2%.

| solar cell sheet



solar division

URBAN CONSTRUCTION PARTNERS



*Solar Green Energy,
Building a Better Life.*

Solar Division Strategic Plan



Expand battery production capacity



Develop new technologies



Improve the industrial chain



Deploy overseas markets.

Four strategic
preparations

"Safety City, Green Future"



Cable Division



Solar Division



**Green Construction
Division**

Urban Construction + Green Energy

The three major business divisions work in concert, focusing on the "urban construction + green energy" development strategy. With steel wire rope manufacturing as the cornerstone to accumulate manufacturing industry genes, photovoltaic cells are used as an entry point to layout the new energy track. Green building business serves as a traffic entrance to link the zero-carbon market, aiming to realize the mission and vision of guarding the original aspiration of the city and building a green future.

CHAPTER 03

EXTENDED SERVICE

Extension direction

solar cell manufacturing direction

Industrial Research Institute,
process development, strategic
investment in next-generation
battery technology.

Solar industry chain derivative direction

High-performance component
research and development,
production, application.
Downstream power station
development.

Green zero carbon direction

Zero-carbon buildings
zero-carbon factories,
integrated energy
management.

Strategic investment center

Manufacturing DNA advantage — Provides cost-effective hardware products.

Green building design capability — Offers green building design, EPC project packaging services.



**ZERO CARBON
BUILDING DESIGNER**

**ZERO CARBON
FACTORY PRACTITIONERS**



 **SAFETY**

| Zero Carbon Building Designer



Green building design

Provide green building design
EPC project total contracting services



BIPV efficient component development

BIPV efficient component development

| Zero carbon factory practitioners

Wuxi Safety Green factory zero carbon upgrading

Average annual green electricity generation is 5.24 million kWh (kilowatt-hours).

Solar-integrated
charging shed

Distributed
photovoltaic

Wind power
generation system

Energy monitoring
station

Energy monitoring
station

Green building
design

Clean energy
substitution

Energy control
system

Green supply
chain system

Green
transportation

Phase I has an average annual green electricity generation of 5.85 million kWh.

Anhui SAFETY New Energy solar
technology zero carbon factory

| Safety Zero Carbon Path Planning

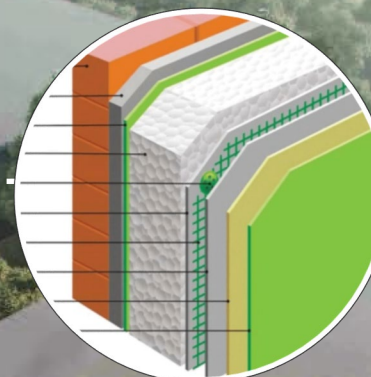
	2023	2024	2025	2030	
Zero carbon practice	Green energy products — Photovoltaic cells, High polymer rope cores		100% (Zero carbon plant)	Zero carbon product	
	Green energy substitution — 50% green electricity	Green energy substitution — 70% green electricity			
Responsible business	Green supply chain management: achieve 100% supplier rectification by 2025		Supply chain green compliance		
	The group implements zero-carbon environmental governance within its organization		Achieve zero-carbon operationally		
	0 Major incidents		Provide a safe and healthy working environment for employees		
Sustainable development	Choose renewable material replacement in the manufacturing process				
	Reduce waste emissions and promote the recycling value of waste continuously				

Transforming from a practitioner of zero-carbon factories to an enabler.

Zero Carbon Factory Enabler



Rooftop solar



Building insulation



PV glass



Solar-Storage-Charging
Integrated Carport



Geothermal Heat
Pump



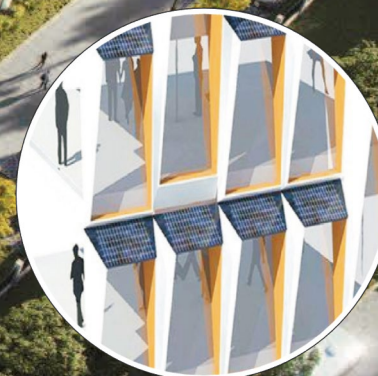
Air Compressor Heat
Recovery System



Green Lighting System



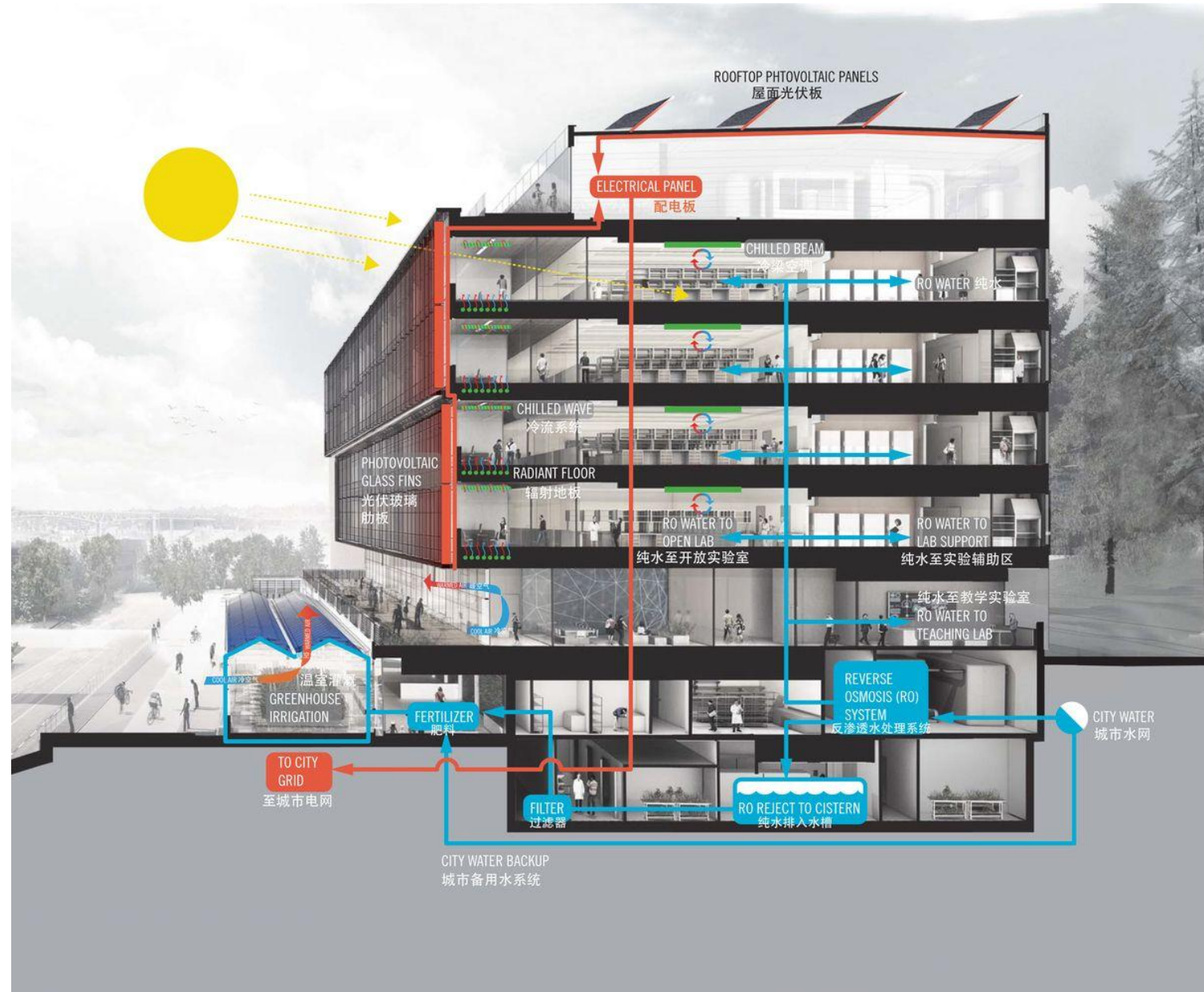
Green building design



Solar shading

— Hefei Lianpeng Industrial Plant

| Zero Carbon Factory Enabler



— Wuxi State-owned Investment Project



THANKS

S A F E T Y C I T Y , G R E E N F U T U R E

